

SIDE ELEVATION

ELEVATION
(LOOKING DOWNSTREAM)

NOTES

- ESTIMATED SHIP WEIGHTS:
PER LANCE ASSEMBLY: 350 (LBS.)
TOTAL OF 22 LANCE ASSEMBLIES: 7,700 (LBS.)
CENTER SUPPORT STRUCTURE: 2,550 (LBS.)
TOTAL: 10,250 (LBS.)
- PIPING TO BE IN ACCORDANCE WITH ANSI/ASME B31.1 AS APPLICABLE.
- FLANGE BOLT HOLES TO STRADDLE CENTERLINES.
- DESIGN TEMP. = 750°
- MINIMUM 10% SPARE GASKETS, STUDS, & NUTS ARE INCLUDED.
- TOP CENTER SUPPORT FABRICATED WITH EXTRA LENGTH, AND SHOULD BE CUT TO FIT IN THE FIELD.
- UNIT #1 SHOWN. TWO (2) UNITS ARE REQUIRED.
UNIT #1 HAS THE PREFIX 1
UNIT #2 HAS THE PREFIX 2
- CONNECTIONS ARE, AS SHOWN:
(A) FLANGE 2\"/>

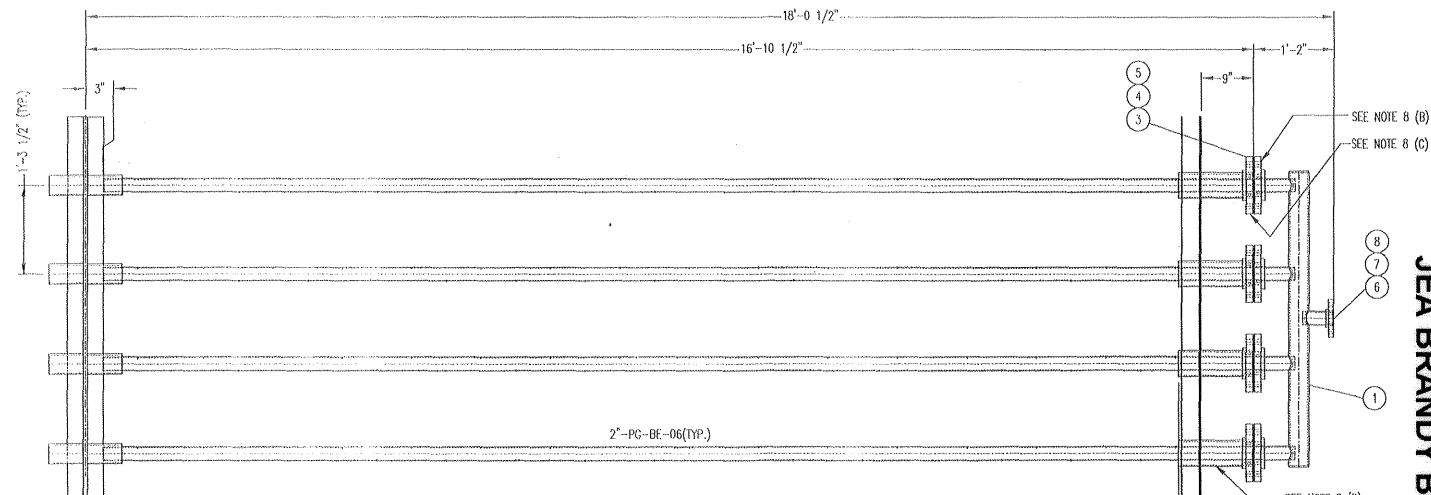
Review does not relieve contractor from responsibility for errors or deviations from contract requirements

UTILITY ENGINEERING

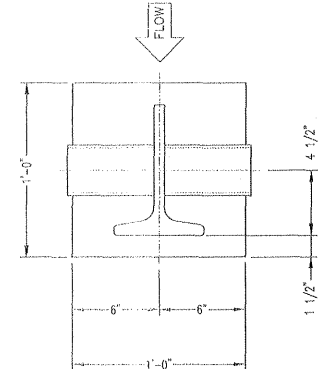
WPKM

- ☒ NO EXCEPTIONS NOTED
Release for manufacture
- ☐ EXCEPTIONS NOTED
Release for manufacture
Revise and resubmit for distribution
- ☐ RETURNED FOR CORRECTION
Do not proceed
Revise and resubmit for authorization

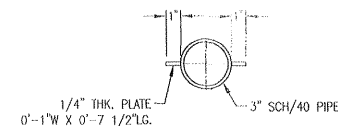
SHIPPING LIST			
ITEM	QTY.	PART NO.	DESCRIPTION
1	1	70291C-D2020401	AMMONIA INJECTION GRID ASSEMBLIES (SET OF 22) 1AIG-291
2	1	70291C-D2020301	TOP & BOTTOM CENTER SUPPORTS (1CS-291A, 1CS-291B)
3	97	GSW-007-004000-005	GASKET 4\"/>



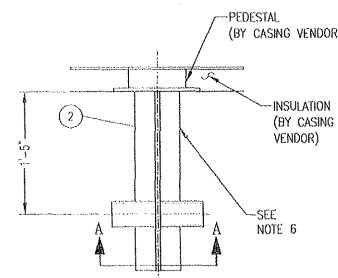
LANCE DETAIL
(TYP. 11 PLC'S, MIRROR 11 PLC'S)



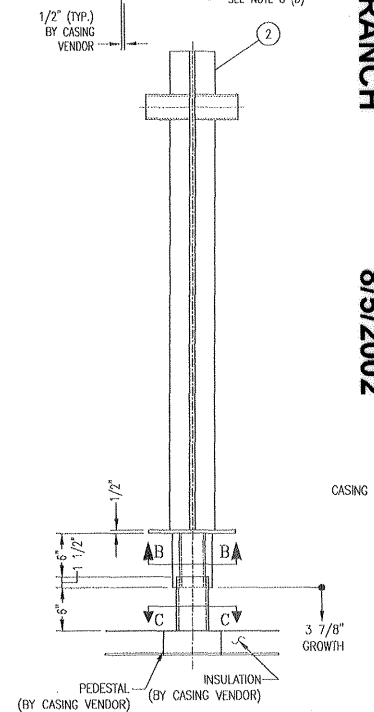
SECTION A-A



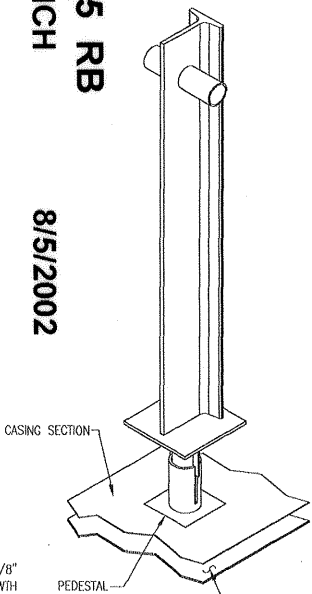
SECTION B-B



SECTION C-C



DETAIL 2



DETAIL 2 ISOMETRIC
(NOT TO SCALE)

NOOTER/ERIKSEN INC. VENDOR SUBMITTAL REVIEW					
REVIEW OF VENDOR DRAWINGS DOES NOT RELIEVE THE VENDOR OF RESPONSIBILITIES FOR ACCURACY OF DIMENSIONS AND COMPLIANCE TO CODES, NOOTER/ERIKSEN SPECIFICATIONS AND P.O. REQUIREMENTS					
<input checked="" type="checkbox"/> A REVIEWED AND ACCEPTED <input type="checkbox"/> B REVIEWED WITH COMMENTS (WORK MAY PROCEED) <input type="checkbox"/> C REVISE AND RESUBMIT (WORK MAY NOT PROCEED) <input type="checkbox"/> D REVIEWED FOR INFORMATION ONLY					
RELEASE DATE: 7-29-02		REVIEWERS INITIALS: <i>WPK</i> <i>RF</i>			
PROJECT: JEA BRANDY					
JOB NO		CODE	SHT	REV	FE
DRAWING NO. 014139-SC-302		B	X		

		PEERLESS MFG. CO. 2819 WALNUT HILL LANE DALLAS, TEXAS 75229 (214) 357-6181	
CUST: NOOTER/ERIKSEN, INC.		PROJ: JEA BRANDY	
LOCATION: BALDWIN, FL		SCALE: 3/16"=1'-0"	
DATE: 05/30/02		P.O. NO: 17457	
TITLE: AMMONIA INJECTION GRID GENERAL ARRANGEMENT		QTY: 2	
DRN BY: FM	CHK'D:	P.E.:	REV. 1
SO NO: -DOC NO: 70291C	D2020201		